
**CENTRAL BANK OF THE
TURKISH REPUBLIC OF NORTHERN CYPRUS**

QUARTERLY BULLETIN



ISSUE: 2007- Q3

DISCLAIMER

- The statistical tables on the selected balance sheet items of banks appearing on the Quarterly Bulletin of the Central Bank of the Turkish Republic of Northern Cyprus (TRNC) are drawn up by using the temporary financial statements.

- The Central Bank of the TRNC does not guarantee the accuracy of the financial statements included in the Quarterly Bulletin and does not accept any responsibility regarding these statements, which are based on temporary data submitted by banks and released solely for information purposes.

- The Central Bank of the TRNC has right to make any changes partially or completely or to add new data in the statements included in the Quarterly Bulletin without announcing in advance.

- Any periodic information in any issue of Quarterly Bulletin can be changed as a result of updating in the forthcoming issues.

- Information included in the Quarterly Bulletin can be published without permission by giving reference.

- This bulletin was produced by the Research and Fund Management Department and published with the approval of the Board of the Directors of the Central Bank of the TRNC.

- This bulletin is published on the official website of the Central Bank of the TRNC.

© The Central Bank of the TRNC,

Address

Bedreddin Demirel Avenue,
Lefkoşa – TRNC

Postal Address

POB. 857, Lefkoşa-TRNC

Telephone

0392 - 228 32 16 (10 Lines)

Fax

+0392 - 228 21 31

+0392 - 228 52 40

Telex

57493

Website

<http://www.kktcmb.trnc.net>

E-mail

info@kktcmb.trnc.net

(Empty Page)

CONTENTS

	<u>Pages</u>
I. GENERAL ASSESSMENT	7-12
II. LEGAL ARRANGEMENTS	13-15
III. ECONOMIC DEVELOPMENTS	17-26
Inflation	19-20
Consumer Price Index (1998 – 1999 = Basic Year)	19
Consumer Price Index (1998 - 1999 = 100 Basic Year) Effects on Rate of Change Over Quarters and Months	20
Money Supply	20
Budget	21
Budget for the Fiscal Year - 2007	21
Budget Revenues for the Fiscal Year - 2007	21
Budget Expenditures for the Fiscal Year - 2007	21
Foreign Trade	22-24
Imports	22
Yearly	22
Turkey and Other Countries (USD)	22
Share of Turkey and Other Countries in Total Imports (%)	22
Exports	23
Yearly	23
Turkey and Other Countries (USD)	23
Share of Turkey and Other Countries in Total Exports (%)	23
Imports by Countries (USD)	24
Exports by Countries (USD)	24
Tourism	25-26
Number of Arrivals (Excluding TRNC Citizens) by Months	25
Number of Arrivals by Port of Entry (%)	25
Number of Arrivals From South Cyprus (Excluding TRNC Citizens) by Months	26

Occupancy Rate of Tourists in Tourist Accommodation Establishments (Monthly)	26
IV MONEY AND BANKING STATISTICS	27-49
Central Bank	29-36
Balance Sheet Items of the Central Bank of the TRNC	29
Liquid Assets of the Central Bank of the TRNC	29
Credits to Banking Sector by the Central Bank of the TRNC	29
Deposits with the Central Bank of the TRNC	30
Exchange Rates of the Central Bank of the TRNC	31
Cross Rates of the Central Bank of the TRNC	31
Ratios On Bills Rediscounted of the Central Bank of the TRNC	32
Required Reserve Ratios	33
Liquidity Ratios	33
Over – Drawn Cheques	34
Interest Rates on TRY and FX Reserve Requirements Applied by the Central Bank of the TRNC	35
Interest Rates on Bank Deposits Applied by the Central Bank of the TRNC	36
Banking Sector	37-49
Consolidated Balance-Sheet of the Banking Sector	37
Sectoral Distribution of the Credits and the Maturity Distribution of the Deposits in Banking Sector – in Brief	38
Distribution of the Deposits in Banking Sector by Maturity Breakdown – in Brief	38
Credits in Banking Sector	39
Sectoral Distribution of the Credits in Banking Sector (TRY)	40
Sectoral Distribution of the Credits in Banking Sector (FX)	41
Distrubution of the Credits in Banking Sector by Currencies	42
Deposits in Banking Sector	43
Distrubution of the Deposits in Banking Sector by Currencies	44
Licensed Banks Operating Under Banking Law	45
Interest Rates on TRY Deposits Applied by Banks (Minimum & Maximum)	46

Interest Rates on USD Deposits Applied by Banks (Minimum & Maximum)	47
Interest Rates on EURO Deposits Applied by Banks (Minimum & Maximum)	48
Interest Rates on GBP Deposits Applied by Banks (Minimum & Maximum)	49
V OTHER	51-53
Minimum Wages	53

(Empty Page)

I. GENERAL ASSESSMENT

(Empty Page)

The content of this Q3-2007 Bulletin is including economic developments and the data of the Central Bank over the months of July, August and September 2007. Whereas, the data on Banking Sector those obtained from the banks, is given over the period of May-August 2007. A general assessment of the Bulletin which consists of five main sections is given below:

- 1. Increase in the CPI (Consumer Prices Index) reached to 7,70% since the beginning of the year.** Inflation rate started to increase in the third quarter contrary to the first two quarters of this year. CPI increased by 4,00% from the second quarter and 7,70% since the beginning of this year. Price increases in the second quarter was explained by the VAT rate adjustments and a result of the additional withholding tax collections from the imports but in the third quarter price changes seem to arise due to the seasonal effects. Both the impacts of global warming on certain agricultural product prices and the opening of school period accelerated the inflation in the last quarter. When the annual trend of the inflation is analyzed it has been observed that the average level of inflation is lower than the last year's same period. Although the inflation made an upward trend contrary to the third quarter of the previous year but the average rates are still below the last year.

When the change in the prices of main groups analyzed, it has been observed that the highest increase occurred in the food and non alcoholic beverages category. Price increases in fresh fruits and vegetables in this period arise from the low rainfall and poor harvest due to global warming in Europe and elsewhere. Specially, the increase in grain prices which inflated the prices of bread and other flour products in August. School openings and an increase in the demand for education materials caused increases in the prices of education product category during this period as well. Historical prices of oil influenced the prices of some chemicals and non-fuel oil derivative products' prices in the same period.

- 2. According to the budget results for the first nine months of this year, total amount of domestic revenues were 1.139,81 million TRY where the total amount of expenditures were 1.391,50 million TRY.** When the total aid and donations are exempted budget has a deficit of equal to 251,69 million TRY. This figure was 265,78 million TRY during the first six months of this year. Although the some tax rates increased during this year but this didn't cause any significant increase in tax revenues, furthermore, serious increases in expenditure items creates fragility in sustaining budget balance. Sustaining fiscal balances considered very important due to its potential threat on macroeconomic balances. Due to this inter linkages in the economy, arrangements of tax rates and other relevant fiscal policies must take all the macroeconomic outputs into consideration rather than focusing only on budgetary balance concerns.

3. Trade deficit according to the last year's first nine months figures remained same in US dollar terms but decreased by 6,60% in terms of Turkish Lira. Total imports during the first nine months were \$1.018,17 million and export figures were only \$64,8 million. With those figures, total trade deficit is \$953,3 million. Value of total imports in terms of dollars increased by 1% compared with the same period of last year, whereas the value in terms of TRY decreased by 5,50%. Since the majority of imports are from Turkey (69,00%), by looking at the New Turkish Lira value of imports it can be said that demand for imports are declining (although the invoicing of some products from Turkey are in Euro or Dollar units). Another indicator of declining import demand can be seen from the import figures of vehicles, value of vehicle imports decreased by 3,00% compared with the same period of last year. Other than vehicles, import values of construction materials such as iron bar, cement and timber remained nearly at 2006 levels where the prices of these products increased in dollar units. These levels may indicate the declining demand for imported construction materials. Items having an increase in their values compared with the same period of 2006 may be due to the international price increases. Specially products such as wheat, corn, feed whose prices affected from poor harvest due to global warming and others such as chemicals and petroleum products whose affected from historical high oil prices.

When the export values are considered for the same period of last year it has been noticed that it increased from 54,5 million US Dollar to 64,8 million US Dollar level. According to these values, total exports increased by 18,80% within a year. Due to the exchange rates not only the dollar value of exports to Turkey increased but the share of exports to Turkey increased as well. According to the first nine months figures citrus and dairy product exports took the first row, followed by clothing, metal wastes. Due to the seasonal nature of products like citrus and potatoes whose harvests are completed in early spring impose a limitation to any increase in exports till the end of this year. But with the ongoing exchange rates total value of exports is expected to be over 70,0 million at the end of this year.

4. When the total number of arrivals to TRNC and overnights are considered as the main tourism indicators, a little increase may be noticed compared with last two quarter's of this year. Looking to the total number of passengers, last year was 552,000 passengers where this year reached to 604,000. But when the occupancy rates are considered this year's rates are below last year rates. The reason for this may be the increase in the total bed capacity with the openings of new hotels. Another reason may be the arrivals of some foreigners as land owner and preferring to stay in their properties rather than at touristic hotels.

5. A deceleration in increasing trend in volume of the balance-sheet of The Central Bank is continued. Relatively a lower growth rate of 0,80% in the third quarter is achieved, whereas this rate was 7,30% and 3,00% over the first and second quarters of the year respectively.

- 6. The liquid assets, which has the highest share in the balance-sheet is increased by 0,61 points and reached to 88,64% in the total assets.** The item of liquid assets which consists of cash assets, gold, deposits with the banks and securities portfolio, is increased by 17,8 million TRY and reached to 1.188,4 million TRY. This is due to the 5,50% increase in the FX items, despite of a decrease of 1,90% realized in the TRY items.
- 7. Total credits residual of public sector and banking sector is realized as 114,9 million TRY, by the end of the third quarter** As a result of collections done, total credits are decreased by 4,4 million TRY in comparison with the end of the previous period. Total arrears of rediscounted credits granted to the banking sector is 5,2 million TRY by the date 30rd September 2007.
- 8. As of the end of third quarter, total capital & reserves (profit/loss account excluded) are 95,2 million TRY.** So as a result of this, no significant changes occurred in the portion of capital & reserves in total assets and has risen from 7,06% to 7,10%.
- 9. Although the portion of the total deposits item (the sum of public, banks and other deposits) within total liabilities has declined by 1,81 points to 53.09% by the end of September 2007, still keep its characteristic of being the main source of the fund of the Bank.** The portion of banks deposit has decreased by 2,24 points to 90,65% whereas, the portion of public deposit has increased by 1,50 points to 8,49%, in the total deposits. By the end of the third quarter, the amount of total deposits is decreased by 18,2 million TRY and realized as 711,9 million TRY.
- 10. Required reserves; the second major fund resource of the Bank has declined 0,82% and realized as 467,9 million TRY.** Within this quarter, the portion of the required reserves of TRY in the total required reserves has increased by 1,69 points and reached to 50,28%. As a consequence of this, reversely to TRY case, the required reserves of FX has decreased by 1,69 points and decreased to 49,72%.
- 11. In respect to the end of the August 2007, the total assets of the banking sector has reached to 6,0 billions TRY.** Over the period of May-August 2007, a growth of 4,47% is occurred in the total assets of the sector. The mentioned growth is a consequent of the increases in the items of securities portfolio, required reserves, credits and other assets. By examining with respect to the bank groups, the increase in the total assets of the sector is mainly contributed by 'Private Banks'. The share of the item of claims on banks in the total assets is decreased by 1,35 points and is realized as 23,18% by the end of August 2007.

- 12. A decrease has happened in the liquid assets of the banking sector.** Total amount of the items of, cash assets, Central Bank, claims on banks and securities portfolio those are forming up the liquid assets of the banking sector, has receded from 2.442,8 million TRY to 2.410,6 TRY. Consequently, share of the of the liquid assets in the total assets has decreased by 2,34 points and to set back to 39,89%.
- 13. The share of the gross-credits (sum of credits and past-due loans) in the total assets has increased by 0,31 points.** Gross-credits has increased 124,0 million TRY and reached to 2.478,2 million TRY in total, whereas it was 2.354,2 million TRY by the end of May 2007. Examining the shares in total gross-credits by the bank groups, a decrease in public banks of 1,88%, an increase in private banks and foreign banks branches of 4,39% and 49,13% occurred respectively. According to the types of gross-credits, both TRY and FX cross-credits have increased by 2,99% and 8,56% and reached to 1.432,0 and 1.046,2 million TRY respectively. A shrink in the shares of public sector and other sectors and an expansion in the shares of trade sector and consumer credits has occurred in comparison with the second quarter of the year.
- 14. Although the total deposits of the sector is approximately increased by 3,24% with respect to the end of May 2007, the share of this item in the total sources is decreased by 0,98%.** If the deposits are examined by means of TRY-FX compositions, an increase in both TRY deposits of 4,34% and FX deposits of 2,12% can be observed. In spite of, TRY deposits of all banks' groups have increased, FX deposits of the public banks group are decreased while it is increased for the private banks and foreign banks branches groups. When the deposits are considered by maturity, the changes in the amount of neither sight nor fixed term deposits are negligible.
- 15. By the end of August 2007, capital and reserves have increased.** The share of this item is reached to 9,28% by the end of the August 2007, whereas it was 8,94% at the end of the May 2007. In respect to the end of August 2007, total capital and reserves has increased 43,2 million TRY and reached to 560,7 Million TRY, while it was 517,5 million TRY as of end of the May 2007. Capital and reserves for all groups of the banks (public, private and foreign banks branches) has increased and realized as 5,03%, 7,07% and 11,90% respectively.

II. LEGAL ARRANGEMENTS

(Empty Page)

The CENTRAL BANK of the TURKISH REPUBLIC of NORTHERN CYPRUS

NOTIFICATIONS, CIRCULARS and the DECISIONS of the BOARD of DIRECTORS
ISSUED On the OFFICIAL GAZETTE

TOPIC	NOTIFICATIONS, CIRCULARS and the DECISIONS of the BOARD of DIRECTORS ISSUED on the OFFICIAL GAZETTE		OFFICIAL GAZETTE	
	DATE	NUMBER	DATE	NUMBER
The notification about the “Measurement and Assessment of The Capital Adequacy of The Banks” in accordance with the article 33 of The Banking Law of the TRNC (Law No. 41/2001).			09.08.2007	144
The notification for the amendment of the notification about the “Measurement and Assessment of The Capital Adequacy of The Banks” in accordance with the article 33 of The Banking Law of the TRNC (Law No. 41/2001).			17.08.2007	151
The Decision, about the Annual Rate of Interest shall be applied to TRY deposit accounts by the Central Bank, in accordance with the article 11(1) of The Law on the Central Bank of the TRNC (Law No. 41/2001)	20.09.2007	613	08.10.2007	182
The Decision, about the Annual Rate of Interest shall be applied to TRY rediscount & advance operations referring to the article 11(1) and in accordance with the periods mentioned in the articles 31(1)(A)(B) and (C) of the Law on the Central Bank of the TRNC (Law No. 41/2001).	21.09.2007	614	08.10.2007	182
The Decision taken about the Required Reserves Ratios, in accordance with the article 23 of the Law on the Central Bank of the TRNC (Law No. 41/2001).	21.09.2007	615	08.10.2007	182

Source: Central Bank of the TRNC

(Empty Page)

III. ECONOMIC DEVELOPMENTS

(Empty Page)

CONSUMER PRICE INDEX (1998-1999=100 BASIC YEAR)

MAIN GROUPS	INDEX VALUES				RATE OF CHANGE OVER PREVIOUS MONTH (%)	RATE OF CHANGE OVER Q4 2006 (%)	RATE OF CHANGE OVER Q3 2006 (%)
	SEPTEMBER	DECEMBER	AUGUST	SEPTEMBER			
	2006	2006	2007	2007			
1. Food and Nonalcoholic Beverages	685,1	691,2	751,9	769,9	2,4	11,4	12,4
2. Alcoholic Beverages and Tobacco	1277,3	1.280,0	1.379,3	1.514,5	9,8	18,3	18,6
3. Clothing and Footwear	853,0	849,8	872,5	893,7	2,4	5,2	4,8
4. Housing, Water, Electricity, Gas and Other Fuels	1.217,5	1.215,4	1.265,5	1.266,9	0,1	4,2	4,1
5. Furnitures, Household Appliances and Services	760,3	770,7	800,9	816,2	1,9	5,9	7,4
6. Health	361,5	890,5	963,9	962,5	-0,1	8,1	11,7
7. Transportation	1.075,1	1.121,9	1.123,3	1.125,0	0,1	0,3	4,6
8. Communication	618,2	608,2	598,9	614,5	2,6	1,0	-0,6
9. Entertainment and Culture	604,7	660,6	660,7	668,8	1,2	1,2	10,6
10. Education	1.176,9	1.457,3	1.474,3	1.467,1	-0,5	0,7	24,7
11. Restaurants and Hotels	866,3	873,8	958,6	981,6	2,4	12,3	13,3
12. Other Goods and Services	927,1	928,2	1.163,8	1.166,9	0,3	25,7	25,9
Total	860,0	883,8	936,1	951,4	1,6	7,7	10,6

Source: State Planning Organization

**CONSUMER PRICE INDEX (1998-1999=100 BASIC YEAR)
EFFECTS on RATE of CHANGE Over Quarters and Months**

MAIN GROUPS	Q1	Q2	July.	Aug.	Sept.	Q3
1. Food and Nonalcoholic Beverages	1,5	-1,5	0,3	2,5	0,7	3,5
2. Alcoholic Beverages and Tobacco	0,2	0,1	0,0	0,0	0,3	0,3
3. Clothing and Footwear	-0,7	1,2	-0,1	-0,3	0,2	-0,2
4. Housing, Water, Electricity, Gas and Other Fuels	0,1	0,2	0,0	0,0	0,0	0,0
5. Furnitures, Household Appliances and Services	0,4	0,0	0,0	0,0	0,2	0,2
6. Health	0,3	0,0	0,0	0,0	0,0	0,0
7. Transportation	0,1	0,0	0,0	-0,1	0,0	-0,1
8. Communication	0,0	-0,1	0,0	0,0	0,1	0,1
9. Entertainment and Culture	-0,1	0,0	0,0	0,0	0,0	0,0
10. Education	0,0	0,0	0,0	0,1	0,0	0,1
11. Restaurants and Hotels	0,2	0,1	0,0	0,0	0,1	0,1
12. Other Goods and Services	1,4	0,0	0,0	0,0	0,0	0,0
Total	3,4	0,0	0,2	2,2	1,6	4,0

Source: State Planning Organisation

MONEY SUPPLY

YEAR	PERIOD	M1	Change	M2	Change	M3	Change
			%		%		%
2002		298.144	0,00	1.729.101	0,00	1.970.072	0,00
2003		424.078	42,24	2.317.527	34,03	2.608.176	32,39
2004		618.443	45,83	3.017.747	30,21	3.382.713	29,70
2005		695.902	12,53	3.382.850	12,10	3.848.986	13,78
2006	I	638.391	-8,26	3.526.667	4,25	3.979.620	3,39
	II	755.319	18,32	4.146.598	17,58	4.637.870	16,54
	III	775.535	2,68	4.205.975	1,43	4.703.223	1,41
	IV	780.701	0,67	4.319.530	2,70	4.859.891	3,33
2007	I	764.252	-2,11	4.415.145	2,21	4.938.193	1,61
	II	783.140	2,47	4.490.585	1,71	5.081.373	2,90

Source: Central Bank of the TRNC

**BUDGET FOR THE FISCAL YEAR 2007
Revenues and Expenditures in General**

	Forecast	Revised	Actual			
			Q1	Q2	Q3	Jan. – Sept.
Total Revenues	2.003.842.822,0	2.235.329.471,7	421.923.655,5	497.444.744,2	590.099.366,3	1.509.467.766,0
Total Expenditures	2.003.842.822,0	2.235.329.471,7	380.168.883,2	520.281.668,9	491.051.997,6	1.391.502.549,7
Difference / Surplus	0,0	0,0	41.754.772,3	-22.836.924,7	99.047.368,7	117.965.216,3

**BUDGET REVENUES FOR THE FISCAL YEAR 2007
(January - September 2007)**

	Budget						
	Forecast	Revised	Revenue Q1	Revenue Q2	Revenue Q3	Balance	Accrual Q3 (%)
Tax	980.870.000,0	980.870.000,0	192.122.185,1	225.806.689,1	255.417.755,3	307.523.370,5	26,0
Non-tax	497.055.322,0	536.942.524,2	120.615.111,5	141.661.040,6	208.734.426,7	65.931.945,4	38,9
Capital	536.000,0	536.000,0	448.200,5	173.750,4	169.643,5	-255.594,4	31,6
Grants, Aid and Loans	560.000.000,0	729.630.228,2	115.336.808,3	119.366.737,4	134.974.492,5	359.952.190,1	18,5
Collection of Revenues	0	21.969.219,3	0	21.970.000	0,0	-780,7	0,0
Reimbursements	-34.618.500,0	-34.618.500	-6.598.649,9	-11.533.473,3	-9.196.951,6	-7.289.425,2	26,6
Total	2.003.842.822,0	2.235.329.471,7	421.923.655,5	497.444.744,2	590.099.366,4	725.861.705,7	26,4

**BUDGET EXPENDITURES FOR THE FISCAL YEAR 2007
(January - September 2007)**

	Budget						
	Forecast	Revised	Revenue Q1	Revenue Q2	Revenue Q3	Balance	Accrual Q3 (%)
Personnel	752.840.008,0	768.774.989,6	163.178.398,3	181.834.002,1	198.384.154,0	225.378.435,2	25,8
Social Sec.Gov't Premium	34.700.360,0	35.583.586,2	7.661.733,1	8.436.402,4	8.493.210,7	10.992.240,0	23,9
Purchases of Goods & Services	124.776.525,0	145.014.058,0	21.438.267,8	32.421.423,4	28.965.593,5	62.188.773,3	20,0
Interests	0,0	38.637.837,8	0,0	37.832.333,4	805.504,5	0,0	2,1
Current	726.536.740,0	771.654.708,8	165.599.505,1	207.127.197,8	180.262.777,1	218.665.228,7	23,4
Capital	175.205.000,0	297.287.779,5	17.937.217,2	43.241.176,9	49.740.932,7	186.368.452,7	16,7
Transfers (Capital)	53.500.000,0	73.070.210,7	3.482.203,8	4.765.621,8	21.410.712,9	43.411.672,2	29,3
Lending	1.000.000,0	44.228.447,3	871.557,9	4.623.511,1	2.989.112,2	35.744.266,2	6,8
Reserve Allowances	135.284.189,0	61.077.853,4	0,0	0,0	0,0	61.077.853,4	0,0
Total	2.003.842.822,0	2.235.329.471,7	380.168.883,2	520.281.668,9	491.051.997,6	843.826.922,0	22,0

Source: Office of Treasury and Accounting

FOREIGN TRADE

IMPORTS

YEARLY

YEAR	TRY				USD			
	Q1	Q2	Q3	Total	Q1	Q2	Q3	Total
2006	401.138.581	509.524.226	535.881.196	1.446.544.003	300.714.537	350.917.765	355.753.551	1.007.385.853
2007	425.692.608	444.232.706	497.639.309	1.367.564.623	301.928.499	354.659.676	361.586.779	1.018.174.954

TURKEY AND OTHER COUNTRIES (USD)

YEAR	Turkey				Other Countries			
	Q1	Q2	Q3	Total	Q1	Q2	Q3	Total
2006	199.406.774	251.330.686	248.738.247	699.475.707	101.307.763	99.587.079	107.015.305	307.910.146
2007	215.633.063	252.203.367	235.390.437	703.226.867	86.295.436	102.456.309	126.196.342	314.948.087

SHARE OF TURKEY AND OTHER COUNTRIES IN TOTAL IMPORTS (%)

YEAR	Turkey				Other Countries			
	Q1	Q2	Q3	Total	Q1	Q2	Q3	Total
2006	66,3	71,6	69,9	69,4	33,7	28,4	30,1	30,6
2007	71,4	71,1	65,1	69,1	28,6	28,9	34,9	30,9

Source: Office of Commerce

FOREIGN TRADE								
EXPORTS								
YEARLY								
YEAR	TRY				USD			
	Q1	Q2	Q3	Total	Q1	Q2	Q3	Total
2006	29.098.951	31.009.076	15.843.542	75.951.569	21.771.821	22.146.293	10.634.804	54.552.918
2007	41.073.412	29.055.871	17.798.233	87.927.516	29.338.950	21.676.677	13.861.570	64.877.197
TURKEY AND OTHER COUNTRIES (USD)								
YEAR	Turkey				Other Countries			
	Q1	Q2	Q3	Total	Q1	Q2	Q3	Total
2006	8.752.344	10.821.674	5.758.531	25.332.549	13.019.477	11.324.619	4.876.273	29.220.369
2007	14.551.146	15.682.932	8.512.079	38.746.157	14.787.804	5.993.745	5.349.491	26.131.040
SHARE OF TURKEY AND OTHER COUNTRIES IN TOTAL EXPORTS (%)								
YEAR	Turkey				Other Countries			
	Q1	Q2	Q3	Total	Q1	Q2	Q3	Total
2006	40,2	48,9	54,01	46,4	59,8	51,1	45,9	53,6
2007	49,6	72,3	61,4	59,3	50,4	27,7	38,6	40,7

Source: Office of Commerce

**IMPORTS BY COUNTRIES (USD)
2006-2007**

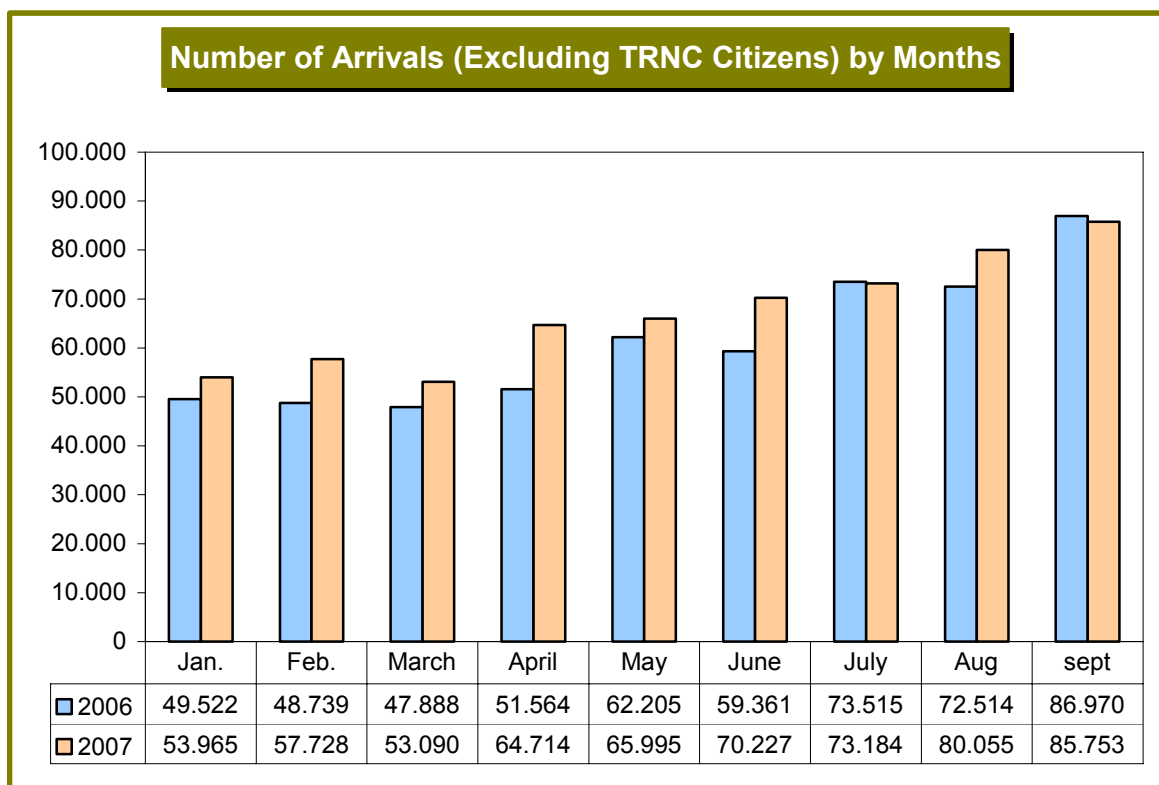
Countries	2006 – Q3	2007 – Q3
TURKEY	248.738.247	235.390.437
EU	60.551.606	64.906.828
OTHER EU	2.237.955	8.518.226
FAR EAST	21.962.076	32.919.914
MIDDLE EAST	18.456.305	12.410.888
OTHER	3.807.361	7.490.486
TOTAL	355.753.550	361.636.779

**EXPORTS BY COUNTRIES (USD)
2006-2007**

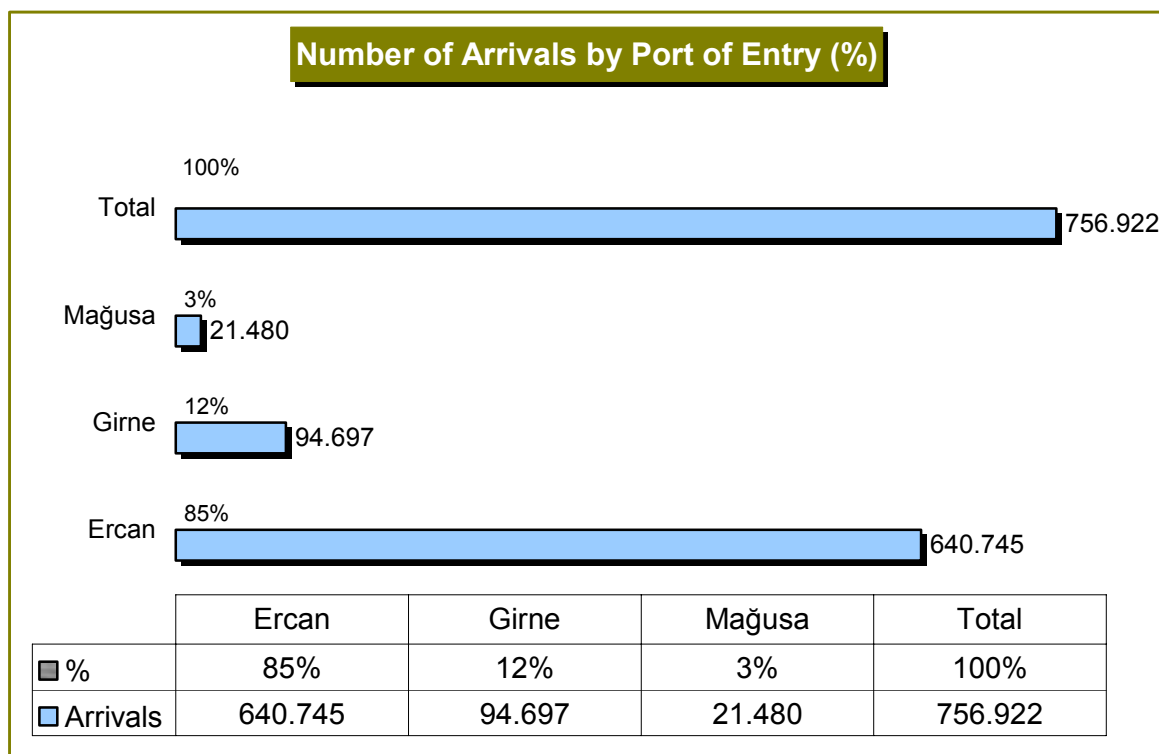
Countries	2006 – Q3	2007 – Q3
TURKEY	5.758.531	8.512.079
EU	2.219.388	2.226.359
OTHER EU	40.420	126.181
FAR EAST	0	0
MIDDLE EAST	2.028.504	1.856.983
OTHER	587.961	1.139.968
TOTAL	10.634.804	13.861.570

Source: Office of Commerce

TOURISM

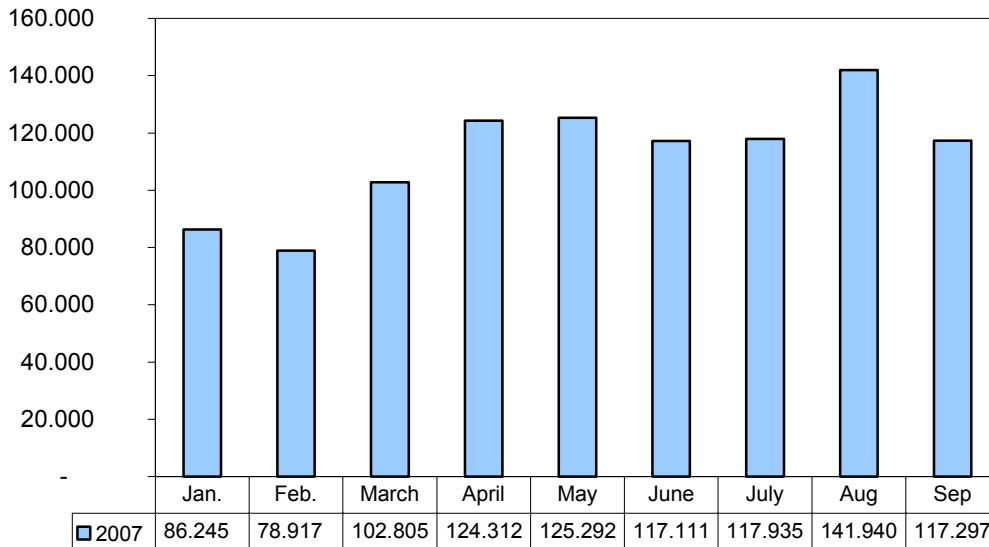


Source: Tourism Planning Office



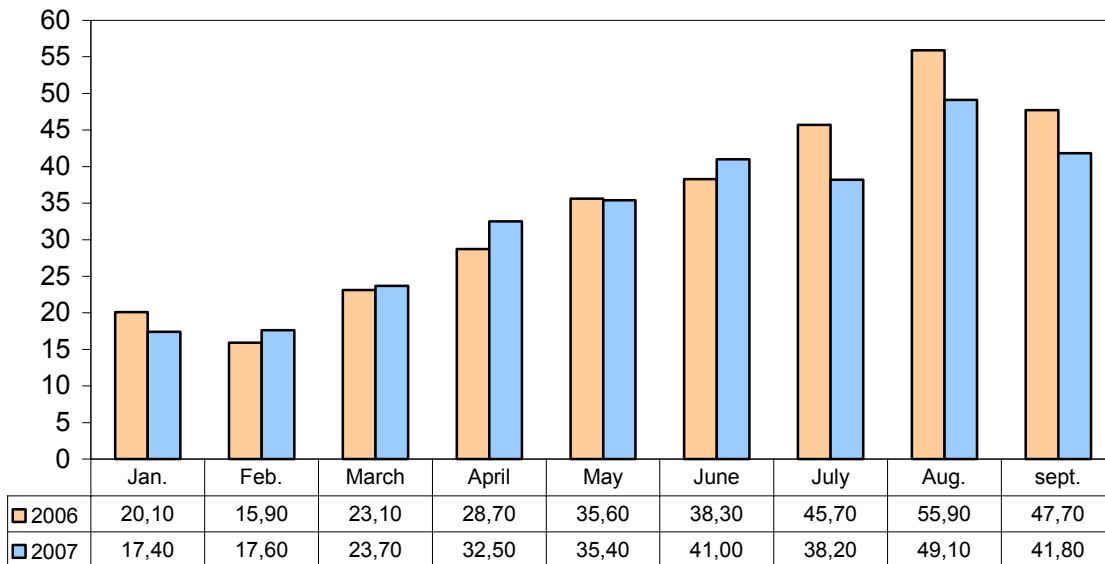
Source: Tourism Planning Office

Number of Arrivals from South Cyprus (Excluding TRNC Citizens) by Months



Source: Tourism Planning Office

Occupancy Rates in Touristic Accommodation Establishments (Monthly)



Source: Tourism Planning Office

IV. MONEY AND BANKING STATISTICS

(Empty Page)

BALANCE SHEET ITEMS of the CENTRAL BANK of the TRNC				
	30 June 07	%	30 September 07	%
	TRY	PORTION	TRY	PORTION
Liquid Assets	1.170.592.826	88,03	1.188.408.616	88,63
Credits	119.336.334	8,97	114.959.071	8,57
Other Assets	39.866.575	3,00	37.455.553	2,79
Total Assets	1.329.795.735	100,00	1.340.823.240	100,00
Capital & Reserves	93.887.867	7,06	95.197.181	7,10
Deposits	730.069.183	54,90	711.854.757	53,09
Required Reserves	471.809.227	35,48	467.935.778	34,90
Other Liabilities	34.029.458	2,56	65.835.524	4,91
Total Liabilities	1.329.795.735	100,00	1.340.823.240	100,00
LIQUID ASSETS of the CENTRAL BANK OF THE TRNC				
	30 June 07	%	30 September 07	%
	TRY	PORTION	TRY	PORTION
LIQUID ASSETS	1.170.592.826	100,00	1.188.408.616	100,00
Cash Assets	46.147.303	3,94	38.971.424	3,28
Gold	753.894	0,06	753.894	0,06
TRL/TRY Deposits with the Banks	261.543.596	22,34	171.321.354	14,42
FX Deposits with the Banks	381.857.949	32,63	456.498.011	38,41
Abroad Banks	104.666.099	8,94	68.191.858	5,74
Securities Portfolio	375.623.985	32,09	452.672.075	38,09
CREDITS TO BANKING SECTOR by the CENTRAL BANK OF THE TRNC				
	30 June 07	%	30 September 07	%
	TRY	PORTION	TRY	PORTION
Credits to Banking Sector	5.762.758	100,00	5.293.501	100,00
Agriculture		0,00		0,00
Trade		0,00		0,00
Manufacturing	2.501.258	43,40	2.279.516	43,06
Export		0,00		0,00
Small Business		0,00		0,00
Tourism		0,00		0,00
Education	3.261.500	56,60	3.013.985	56,94
Eximbank Export		0,00		0,00

Note: Compound interest incomes are included in the amounts.

Source: Central Bank of the TRNC.

DEPOSITS with the CENTRAL BANK of the TRNC

	30 September 06		31 December 06		31 March 07		30 June 07		30 September 07	
	TRY	%	TRY	%	TRY	%	TRY	%	TRY	%
TOTAL	1.028.157.120	100,00	1.085.640.962	100,00	1.185.107.987	100,00	1.201.878.410	100,00	1.179.790.535	100,00
I. PUBLIC DEPOSIT	57.668.704	5,61	65.449.730	6,03	36.270.615	3,06	51.011.784	4,25	60.465.847	5,12
TRY	11.038.313	19,14	6.306.130	9,64	1.522.118	4,20	1.862.563	3,65	5.561.657	9,20
FX	46.630.391	80,86	59.143.600	90,36	34.748.497	95,80	49.149.221	96,35	54.904.190	90,80
II. BANKS	969.215.171	94,27	1.013.897.152	93,39	1.147.859.976	96,86	1.149.949.181	95,67	1.113.332.158	94,37
A- AT CALL	533.567.887	55,05	561.873.714	55,42	667.853.747	58,18	678.139.954	58,97	645.396.380	57,97
TRY	224.357.136	42,05	271.132.222	48,26	422.115.712	63,20	386.279.170	56,96	330.854.293	51,26
FX	309.210.751	57,95	290.741.492	51,74	245.738.035	36,80	291.860.784	43,04	314.542.087	48,74
B- REQUIRED RESERVES	435.647.284	44,95	452.023.438	44,58	480.006.229	41,82	471.809.227	39,25	467.935.778	42,03
TRY	204.848.869	47,02	208.696.624	46,17	229.129.876	47,73	229.263.974	48,59	235.271.599	50,28
FX	230.798.415	52,98	243.326.814	53,83	250.876.353	52,27	242.545.253	51,41	232.664.179	49,72
III. OTHER	1.273.245	0,12	6.294.080	0,58	977.396	0,08	917.445	0,08	5.992.530	0,51
TRY	529.918	41,62	5.582.742	88,70	176.244	18,03	207.507	22,62	5.287.611	88,24
FX	743.327	58,38	711.338	11,30	801.152	81,97	709.938	77,38	704.919	11,76

Source: Central Bank of the TRNC.

**The CENTRAL BANK of the TRNC
EXCHANGE RATES**

TRL-TRY / FOREIGN EXCHANGE

YEAR	MONTH	USD		GBP		EURO		CYP	
		Buying	Selling	Buying	Selling	Buying	Selling	Buying	Selling
1998		312.407	314.230	522.267	525.520	362.765	369.310	613.500	625.770
1999		539.558	542.703	871.628	877.062	537.217	544.711	909.000	927.180
2000		671.093	675.004	992.884	999.073	612.994	621.544	1.001.500	1.021.530
2001		1.439.567	1.446.510	2.081.497	2.092.377	1.268.115	1.274.231	2.105.000	2.210.250
2002		1.634.501	1.642.384	2.618.888	2.632.577	1.703.477	1.711.693	2.800.000	2.940.000
2003		1.395.835	1.402.567	2.476.610	2.489.556	1.745.072	1.753.489	2.880.000	3.024.000
2004		1.342.100	1.348.600	2.576.500	2.590.000	1.826.800	1.835.600	3.046.800	3.199.140
2005		1,3418	1,3483	2,3121	2,3242	1,5875	1,5952	2,6934	2,8281
2006		1,4056	1,4124	2,7569	2,7713	1,8515	1,8604	3,1067	3,2620
2007	1	1,4221	1,4290	2,7941	2,8087	1,8432	1,8521	3,0763	3,2301
	2	1,3922	1,3989	2,7338	2,7481	1,8397	1,8486	3,0681	3,2215
	3	1,3801	1,3868	2,7017	2,7158	1,8383	1,8472	3,0586	3,2116
	4	1,3274	1,3338	2,6477	2,6615	1,8086	1,8173	3,0006	3,1506
	5	1,3253	1,3317	2,6185	2,6322	1,7801	1,7887	2,9497	3,0972
	6	1,3046	1,3109	2,6126	2,6263	1,7585	1,7670	2,9129	3,0585
	7	1,3006	1,3069	2,6333	2,6471	1,7777	1,7863	2,9394	3,0863
	8	1,3242	1,3306	2,6586	2,6725	1,8022	1,8109	2,9819	3,1310
	9	1,2048	1,2106	2,4439	2,4567	1,7086	1,7168	2,8222	2,9633

Note: TRY as from 2005

**The CENTRAL BANK of the TRNC
CROSS RATES**

Foreign Exchange/USD

YEAR	MONTH	GBP	EURO	CYP
1998		1,6724	1,1753	1,9914
1999		1,6161	1,0037	1,7084
2000		1,4801	0,9208	1,5134
2001		1,4465	0,8809	1,5280
2002		1,6029	1,0422	1,7901
2003		1,7750	1,2502	2,1560
2004		1,9205	1,3611	2,3722
2005		1,7238	1,1831	2,0975
2006		1,9621	1,3172	2,3095
2007	1	1,9655	1,2961	2,2604
	2	1,9645	1,3215	2,3029
	3	1,9583	1,3320	2,3159
	4	1,9954	1,3625	2,3621
	5	1,9766	1,3432	2,3257
	6	2,0034	1,3479	2,3331
	7	2,0255	1,3668	2,3616
	8	2,0085	1,3610	2,3531
	9	2,0293	1,4181	2,4478

Source: Central Bank of the TRNC.

RATIOS ON BILLS REDISCOUNTED of the CENTRAL BANK of the TRNC

TYPE OF CURRENCIES															
Effective Dates	TRL / TRY				USD		EURO		GBP		DATE of the DECISION of the BOARD of DIRECTORS	No	DATE Of The OFFICIAL GAZETTE	No	
	IMP.-TRADE	MAN.-TOUR.-AGR.-EDU.	EXPORT	S.BUSINESS	IMP.-TRADE	MAN.-TOUR.-AGR.-EDU.	IMP.-TRADE	MAN.-TOUR.-AGR.-EDU.	IMP.-TRADE	MAN.-TOUR.-AGR.-EDU.					
22.07.1994						8		8			9	15.07.1994	347		
09.06.1995					10		10	8	11	9	31.05.1995	364			
13.02.1998				66							26.01.1998	411	13.02.1998		
16.05.2000				48							28.04.2000	447	16.05.2000		
11.01.2002						8		8			9	07.12.2001	462	11.01.2002	
21.08.2002	75	57	52									07.08.2002	478	21.08.2002	83
03.07.2003	75	54	50	45	10	6	10	6	11	7	24.06.2003	497	03.07.2003	75	
01.10.2003	60	47	45	40								25.09.2003	505	01.10.2003	124
06.02.2004	55	42	40	35								22.01.2004	518	06.02.2004	13
10.12.2004	42	32	30	28								18.11.2004	536	10.12.2004	184
04.02.2005	35	30	28	26	10	6	10	6	11	7	28.01.2005	543	04.02.2005	67	
01.04.2005	33	28	26	24								29.03.2005	549	31.03.2005	47
03.06.2005	30	26	24	22								02.06.2005	553	14.06.2005	94
01.11.2005	26	24	22	20								27.10.2005	567	08.11.2005	193
01.06.2006					12	8	10	6	11	7	26.05.2006	584	05.06.2006	98	
03.07.2006	33	28	26	24								29.06.2006	587	14.07.2006	119
21.09.2007	30	26	24	22								21.09.2007	614	08.10.2007	182

Source: Central Bank of the TRNC.

REQUIRED RESERVE RATIOS		
EFFECTIVE FROM	TRL/TRY	FX
30.06.2002	15	16
30.11.2002	14	15
30.04.2003	13	14
31.10.2003	12	13
31.01.2004	11	12
31.07.2004	10	11
30.06.2006	9	10
30.09.2007	9	9

Source: Central Bank of the TRNC.

LIQUIDITY RATIOS		
General	as from 01.03.2007	10
Special(*)	as from 01.04 2007	15
	as from 01.07.2007	20
	as from 01.10.2007	25

(*) Is applied to a bank, in case of the deposits with banks abroad exceeds five times of the amount of its capital & reserves.
Source: Central Bank of the TRNC.

OVER – DRAWN CHEQUES

Official Gazette Date / Number	Those Prohibited From Using Cheques (Number of Persons)
11.01.2007 / 05	25
29.01.2007 / 16	10
02.02.2007 / 21	13
09.02.2007 / 25	10
21.02.2007 / 32	11
22.02.2007 / 33	14
02.03.2007 / 40	17
12.03.2007 / 47	16
16.03.2007 / 49	14
27.03.2007 / 54	15
29.03.2007 / 55	14
06.04.2007 / 59	13
20.04.2007 / 67	31
30.04.2007 / 74	17
10.05.2007 / 81	6
14.05.2007 / 83	16
23.05.2007 / 89	16
28.05.2007 / 93	9
31.05.2007 / 96	14
08.06.2007 / 101	22
18.06.2007 / 108	23
25.06.2007 / 113	13
27.06.2007 / 115	12
12.07.2007 / 126	16
17.07.2007 / 130	24
27.07.2007 / 136	12
31.07.2007 / 138	13
15.08.2007 / 148	5
15.08.2007 / 148	9
16.08.2007 / 150	22
31.08.2007 / 160	12
12.09.2007 / 168	19
18.09.2007 / 170	9
20.09.2007 / 171	18
28.09.2007 / 175	13
TOTAL:	523

Source: Central Bank of the TRNC.

**INTEREST RATES on TRL/TRY and FX RESERVE REQUIREMENTS APPLIED by
the CENTRAL BANK of the TRNC**

EFFECTIVE DATES	TYPE OF CURRENCIES					Date of the Decision of the BOARD of the DIRECTORS	No	Date of the OFFICIAL GAZETTE	No
	TRL/TRY	USD	EURO	GBP	CYP				
25.10.1984	8,00							25.10.1984	84
13.02.1987	10,00							13.02.1987	17
		6,00	3,00	7,00		30.10.1987	122		
	12,00					29.02.1988	135		
07.06.1991	12,00					22.05.1991	223	07.06.1991	60
		6,00	6,00	9,00	5,00	22.05.1991	224		
02.12.1992		5,00	6,00	8,00	4,00	13.11.1992	273	02.12.1992	116
18.06.1993		3,00	5,00	5,00	1,50	10.06.1993	296	18.06.1993	60
01.03.1999		3,00	3,00	5,00	0,00	12.01.1999	426	01.03.1999	18
16.05.2000	12,00					28.04.2000	447	16.05.2000	57
16.05.2000		3,00	3,00	5,00		28.04.2000	448	16.05.2000	57
28.11.2001		1,00	1,00	2,50		05.10.2001	460	28.11.2001	124
07.05.2002		0,50	0,50	1,50		30.04.2002	474	07.05.2002	50
12.12.2002	12,00	0,35	0,50	1,25		29.11.2002	483	12.12.2002	121
09.07.2003		0,25				02.07.2003	498	09.07.2003	79
01.09.2004		0,50	0,50	1,75		25.08.2004	531	01.09.2004	127
01.04.2005	10,00	0,75	0,50	1,75		29.03.2005	549	31.03.2005	47
01.11.2005	10,00	1,25	0,75	2,00		27.10.2005	567	08.11.2005	197
01.02.2006		2,00	1,00	2,00		31.01.2006	577	10.02.2006	27
03.07.2006	12,00	2,00	1,00	2,00		29.06.2006	587	14.07.2006	119

Source: Central Bank of the TRNC.

INTEREST RATES on BANK DEPOSITS APPLIED by the CENTRAL BANK of the TRNC

TYPE OF CURRENCIES

EFFECTIVE DATES	TYPE OF CURRENCIES																				Decision of the BOARD of DIRECTORS		OFFICIAL GAZETTE	
	TRL / TRY				USD				EURO				GBP				CYP							
	Sight	3 Months	6 Months	1 Year	Sight	3 Months	6 Months	1 Year	Sight	3 Months	6 Months	1 Year	Sight	3 Months	6 Months	1 Year	Sight	3 Months	6 Months	1 Year	Date	No	Date	No
09.11.87					5,00		6,00	8,00	2,00		3,00	4,00	6,00		7,00	8,50	5,00		6,00	7,00	30.10.87	122	09.11.87	119
23.06.92																							23.06.92	250
02.12.92					4,00		5,00	7,00	5,00		6,00	8,00	6,00		8,00	10,00	3,00		4,00	5,00	13.11.92	272	02.12.92	116
18.06.93					2,00		3,00	5,00	4,00		5,00	7,00	4,00		6,00	8,00	1,00		2,00	3,00	10.06.93	296	18.06.93	60
01.03.99					3,00		4,00	5,00	2,00		3,00	4,00	4,00		5,00	6,00	0,00	0,00	0,00	0,00	12.01.99	425	01.03.99	18
16.05.00					3,00	4,00	5,00	6,00	2,00	3,00	4,00	5,00	4,00	5,00	6,00	8,00					28.04.00	446	16.05.00	57
28.11.01					2,00	2,00	2,00	2,00	2,00	2,00	2,00	2,00	4,00	4,00	4,00	4,00					05.10.01	460	28.11.01	124
07.05.02	38,00	38,00	38,00	38,00	1,25	1,25	1,25	1,25	1,25	1,25	1,25	1,25	3,25	3,25	3,25	3,25					30.04.02	474	07.05.02	50
12.12.02					0,75	0,75	0,75	0,75	1,25	1,25	1,25	1,25	2,85	2,85	2,85	2,85					28.11.02	482	12.12.02	121
09.05.03	37,00	37,00	37,00	37,00																	30.04.03	491	09.05.03	47
09.06.03	35,00	35,00	35,00	35,00																	05.06.03	493	09.06.03	63
09.07.03					0,50	0,50	0,50	0,50													02.07.03	498	09.07.03	79
04.08.03	33,00	33,00	33,00	33,00																	17.07.03	499	04.08.03	94
15.08.03	30,00	30,00	30,00	30,00																	07.08.03	503	15.08.03	99
01.10.03	28,00	28,00	28,00	28,00																	22.09.03	504	01.10.03	124
30.10.03	25,00	25,00	25,00	25,00																	23.10.03	507	30.10.03	142
24.02.04	23,00	23,00	23,00	23,00																	09.02.04	519	24.02.04	20
26.03.04	21,00	21,00	21,00	21,00																	18.03.04	521	26.03.04	39
01.09.04					1,00	1,00	1,00	1,00	1,25	1,25	1,25	1,25	3,25	3,25	3,25	3,25					25.08.04	531	01.09.04	127
17.09.04	19,00	19,00	19,00	19,00																	13.09.04	532	17.09.04	133
27.12.04	17,00	17,00	17,00	17,00																	23.12.04	537	27.12.04	197
18.01.05	16,00	16,00	16,00	16,00																	11.01.05	540	18.01.05	11
10.03.05	14,50	14,50	14,50	14,50																	10.03.05	547	18.03.05	38
01.04.05					1,50	1,50	1,50	1,50	1,25	1,25	1,25	1,25	3,25	3,25	3,25	3,25					29.03.05	549	31.03.05	47
03.06.05	14,00	14,00	14,00	14,00	1,75	1,75	1,75	1,75													02.06.05	553	16.06.05	94
17.10.05	13,50	13,50	13,50	13,50																	14.10.05	566	24.10.05	183
01.11.05					2,25	2,25	2,25	2,25													27.10.05	567	08.11.05	193
14.12.05	13,25	13,25	13,25	13,25																	13.12.05	573	20.12.05	220
01.02.06					2,25	2,25	2,25	2,25	1,50	1,50	1,50	1,50	2,25	2,25	2,25	2,25					31.01.06	577	10.02.06	27
01.06.06	13,00	13,00	13,00	13,00	3,75	3,75	3,75	3,75	1,75	1,75	1,75	1,75	3,25	3,25	3,25	3,25					26.05.06	584	01.06.06	98
12.06.06	14,50	14,50	14,50	14,50																	09.06.06	586	15.06.06	104
03.07.06	16,75	16,75	16,75	16,75																	29.06.06	587	14.07.06	119
31.07.06	17,00	17,00	17,00	17,00																	28.07.06	590	31.07.06	128
20.09.07	16,75	16,75	16,75	16,75																	20.09.07	613	08.10.07	182

Note: Between the dates 23.06.1992 – 07.05.2002, the variable interest rates depending upon the amount, is used.

Source: Central Bank of the TRNC.

CONSOLIDATED BALANCE – SHEET of the BANKING SECTOR

ASSET	31 May 2007 TRY								31 August 2007 TRY							
	Public Banks	% Portion	Private Banks	% Portion	Foreign Banks Branches	% Portion	TOTAL	% Portion	Public Banks	% Portion	Private Banks	% Portion	Foreign Banks Branches	% Portion	TOTAL	% Portion
	Cash Assets	12.815.920	0,62	21.857.485	1,22	10.085.338	0,52	44.758.743	0,77	13.496.650	0,63	23.577.254	1,25	14.008.257	0,70	51.082.162
CB-TRNC	171.765.289	8,37	162.834.295	9,12	325.847.277	16,73	660.446.861	11,42	175.539.776	8,16	172.540.698	9,17	276.225.960	13,75	624.306.434	10,33
Claims on Banks	150.201.872	7,32	251.788.264	14,10	1.016.721.213	52,21	1.418.711.349	24,53	177.079.094	8,23	261.332.388	13,89	962.285.978	47,89	1.400.697.460	23,18
Securities Portfolio	79.193.188	3,86	95.408.315	5,34	144.327.072	7,41	318.928.576	5,51	81.293.483	3,78	95.518.708	5,08	157.703.725	7,85	334.515.916	5,54
Required Reserves	156.714.230	7,64	145.162.362	8,13	161.383.129	8,29	463.259.721	8,01	165.068.845	7,67	151.276.051	8,04	164.909.581	8,21	481.254.478	7,96
Credits	1.157.386.199	56,43	737.774.717	41,31	223.797.865	11,49	2.118.958.780	36,63	1.139.658.030	52,96	774.011.838	41,13	332.190.321	16,53	2.245.860.189	37,16
Past-Due Loans	121.296.934	5,91	112.289.639	6,29	1.699.313	0,09	235.285.885	4,07	114.981.978	5,34	113.337.625	6,02	4.086.663	0,20	232.406.266	3,85
Provisions for Past-Due Loans	-47.257.325	-2,30	-62.695.803	-3,51	-1.214.433	-0,06	-111.167.561	-1,92	-47.596.253	-2,21	-61.591.067	-3,27	-1.959.526	-0,10	-111.146.846	-1,84
Other Assets	248.819.970	12,13	321.729.243	18,01	64.826.470	3,32	635.375.683	10,98	332.483.702	15,45	352.011.699	18,70	99.729.292	4,96	784.224.694	12,98
Total:	2.050.936.278	100,00	1.786.148.517	100,00	1.947.473.244	100,00	5.784.558.038	100,00	2.152.005.305	100,00	1.882.015.196	100,00	2.009.180.252	100,00	6.043.200.752	100,00
LIABILITY																
Deposits TRL	1.146.654.749	55,91	640.019.123	35,83	638.763.002	32,80	2.425.436.874	41,93	1.195.466.491	55,55	664.802.432	35,32	657.217.789	32,71	2.517.486.712	41,66
Deposits FX	517.646.883	25,24	849.400.312	47,55	985.271.484	50,59	2.352.318.679	40,67	517.677.557	24,06	876.341.519	46,56	995.519.485	49,55	2.389.538.560	39,54
Interbank TRL	18.027.586	0,88	1.177.898	0,07	100.192	0,01	19.305.676	0,33	21.179.981	0,98	11.947.752	0,63	84.260	0,00	33.211.993	0,55
Interbank FX	20.181.366	0,98	7.486.655	0,42	1.193.459	0,06	28.861.480	0,50	17.215.689	0,80	10.030.920	0,53	14.860.035	0,74	42.106.645	0,70
Other Liabilities	218.601.401	10,66	92.747.574	5,19	129.736.168	6,66	441.085.142	7,63	264.116.176	12,27	109.768.126	5,83	126.191.362	6,28	500.075.665	8,28
Deposits TRL	129.824.294	6,33	195.316.953	10,94	192.408.939	9,88	517.550.187	8,94	136.349.411	6,34	209.124.448	11,11	215.307.320	10,72	560.781.178	9,28
Deposits FX	2.050.936.278	100,00	1.786.148.517	100,00	1.947.473.244	100,00	5.784.558.038	100,00	2.152.005.305	100,00	1.882.015.196	100,00	2.009.180.252	100,00	6.043.200.752	100,00

Source: Central Bank of the TRNC.

SECTORAL DISTRIBUTION of the CREDITS and the MATURITY DISTRIBUTION of the DEPOSITS in BANKING SECTOR – (in Brief)

	TRL/TRY	% PORTION	FX	% PORTION	TOTAL	% PORTION
2006 / III (TRY)	1.055.776.288	100,00	914.109.991	100,00	1.969.886.279	100,00
Public	445.556.581	42,20	130.125.746	14,24	575.682.327	29,22
Trade	149.476.160	14,16	294.764.044	32,25	444.240.204	22,56
Consumer	343.914.636	32,57	369.584.290	40,43	713.498.926	36,22
Others	116.828.911	11,07	119.635.911	13,08	236.464.821	12,00
2006 / IV (TRY)	1.358.506.177	100,00	962.792.577	100,00	2.321.298.754	100,00
Public	660.414.170	48,62	114.091.352	11,85	774.505.522	33,37
Trade	194.870.520	14,34	284.945.912	29,60	479.816.431	20,67
Consumer	456.374.596	33,59	410.219.391	42,60	866.593.986	37,33
Others	46.846.892	3,45	153.535.923	15,95	200.382.815	8,63
2007 / I (TRY)	1.370.351.454	100,00	954.967.193	100,00	2.325.318.647	100,00
Public	651.168.217	47,53	110.542.112	11,58	761.710.329	32,76
Trade	204.651.538	14,93	298.373.022	31,24	503.024.560	21,63
Consumer	474.207.450	34,60	398.693.710	41,75	872.901.160	37,54
Others	40.324.249	2,94	147.358.349	15,43	187.682.599	8,07
2007 / II (TRY)	1.390.506.863	100,00	963.737.803	100,00	2.354.244.666	100,00
Public	664.141.370	47,76	108.232.586	11,23	772.373.956	32,81
Trade	213.146.162	15,33	303.473.058	31,49	516.619.220	21,94
Consumer	473.427.183	34,05	434.007.560	45,03	907.434.743	38,54
Others	39.792.149	2,86	118.024.599	12,25	157.816.748	6,70
2007 / III (TRY)	1.432.032.073	100,00	1.046.234.382	100,00	2.478.266.455	100,00
Public	636.977.529	44,48	108.404.942	10,36	745.382.471	30,08
Trade	223.498.067	15,61	352.185.447	33,66	575.683.514	23,23
Consumer	528.743.695	36,92	469.769.578	44,90	998.513.273	40,29
Others	42.812.782	2,99	115.874.415	11,08	158.687.197	6,40

Note: In the above table, the manufacturing sector is involved in the trade sector; while the "others" refers to the sum of all the other remaining sectors. The expression "Consumer" is used instead of "Personal and Professional Credits and Others".

DISTRIBUTION of the DEPOSITS in BANKING SECTOR by MATURITY BREAKDOWN - (in Brief)

	TRY	% PORTION	FX	% PORTION	TOTAL	% PORTION
2006 / III (TRY)	2.206.799.062	100,00	2.238.072.708	100,00	4.444.871.770	100,00
Sight	251.102.624	11,38	402.597.140	17,99	653.699.763	14,71
Fixed Term	1.955.696.439	88,62	1.835.475.568	82,01	3.791.172.007	85,29
2006 / IV (TRY)	2.301.709.471	100,00	2.379.560.313	100	4.681.269.785	100,00
Sight	280.974.568	12,21	386.413.271	16,24	667.387.839	14,26
Fixed Term	2.020.734.903	87,79	1.993.147.042	83,76	4.013.881.946	85,74
2007 / I (TRY)	2.386.524.001	100,00	2.396.475.293	100,00	4.782.999.294	100,00
Sight	251.626.710	10,54	394.942.306	16,48	646.569.016	13,52
Fixed Term	2.134.897.291	89,46	2.001.532.987	83,52	4.136.430.278	86,48
2007 / II (TRY)	2.444.742.550	100,00	2.381.180.159	100,00	4.825.922.709	100,00
Sight	264.902.573	10,84	381.212.938	16,01	646.115.511	13,39
Fixed Term	2.179.839.977	89,16	1.999.967.221	83,99	4.179.807.198	86,61
2007 / III (TRY)	2.550.698.705	100,00	2.431.645.205	100,00	4.982.343.910	100,00
Sight	287.443.688	11,27	383.119.677	15,76	670.563.364	13,46
Fixed Term	2.263.255.017	88,73	2.048.525.529	84,24	4.311.780.546	86,54

Source: Central Bank of the TRNC.

CREDITS in BANKING SECTOR				
	31 May 07	%	31 August 2007	%
	TRY	Portion	TRY	Portion
Volume of Credits in Banking Sector	2.354.244.666	100,00	2.478.266.455	100,00
Credits (TRY)	1.390.506.863	59,06	1.432.032.073	57,78
-Public Banks	839.589.752	60,17	814.781.590	56,90
-Private Banks	419.980.384	30,10	425.704.873	29,73
-Foreign Banks Branches	130.936.727	9,42	191.545.609	13,38
Credits (FX)	963.737.803	40,94	1.046.234.382	42,22
-Public Banks	439.093.380	45,79	439.858.417	42,04
-Private Banks	430.083.972	44,85	461.644.590	44,12
-Foreign Banks Branches	94.560.451	9,81	144.731.375	13,83
Claims Under Legal Proceedings (Gross) (TRY+FX)	235.285.885	9,99	232.406.266	9,38
-Public Banks	121.296.934	51,55	114.981.978	49,47
-Private Banks	112.289.639	47,72	113.337.625	48,77
-Foreign Banks Branches	1.699.313	0,72	4.086.663	1,76
Provisions for Claims Under Legal Proceedings (TRY+FX)	-111.167.561		-111.146.846	
-Public Banks	-47.257.325	42,51	-47.596.253	42,82
-Private Banks	-62.695.803	56,40	-61.591.067	55,41
-Foreign Banks Branches	-1.214.433	1,10	-1.959.526	1,76

Source: Central Bank of the TRNC.

SECTORAL DISTRIBUTION of the CREDITS in BANKING SECTOR (TRL/TRY)

	31 May 07	%	31 August 2007	%
	TRY	Portion	TRY	Portion
Total Credits	2.354.244.666	100,00	2.478.266.455	100,00
TRY Credits	1.395.280.900	59,27	1.432.032.073	57,78
Public Banks	839.589.752	35,66	814.781.590	32,88
Public Enterprises & Institutions	655.526.417	78,08	628.256.259	77,11
Agriculture	1.823.504	0,22	1.551.684	0,19
Mining & Quarrying		0,00		0,00
Manufacturing		0,00		0,00
Transport & Communication	203.608	0,02	170.222	0,02
Trade	65.898.863	7,85	67.234.957	8,25
Export	17.543	0,00	17.543	0,00
Tourism	6.034.543	0,72	5.972.787	0,73
Building & Construction	1.355.957	0,16	1.221.845	0,15
Personal and Professional Credits	99.016.354	11,79	101.495.514	12,46
Small Business	9.712.963	1,16	8.860.780	1,09
Private Banks	419.980.384	17,84	425.704.873	17,18
Public Enterprises & Institutions	624.184	0,15	678.202	0,16
Agriculture	169.645	0,04	183.735	0,04
Mining & Quarrying	23.122	0,01	39.201	0,01
Manufacturing	2.156.352	0,51	1.294.571	0,30
Transport & Communication	866.926	0,21	1.311.583	0,31
Trade	138.872.489	33,07	146.850.912	34,50
Export	95.225	0,02	98.713	0,02
Tourism	136.508	0,03	235.036	0,06
Building & Construction	18.279.509	4,35	22.149.574	5,20
Personal and Professional Credits	258.144.426	61,47	252.323.256	59,27
Small Business	611.999	0,15	540.091	0,13
Foreign Branch Banks	130.936.727	5,76	191.545.609	7,73
Public Enterprises & Institutions	7.990.769	5,88	8.043.068	4,20
Agriculture	461.097	0,34	459.989	0,24
Mining & Quarrying				0,00
Manufacturing		0,00		0,00
Transport & Communication				0,00
Trade	6.218.458	4,75	8.117.627	4,24
Export				0,00
Tourism				0,00
Building & Construction				0,00
Personal and Professional Credits	116.266.403	88,80	174.924.925	91,32
Small Business				0,00

Source: Central Bank of the TRNC.

SECTORAL DISTRIBUTION of the CREDITS in BANKING SECTOR (FX)

	31 May 07	%	31 August 2007	%
	TRY	Portion	TRY	Portion
Total Credits	2.354.244.266	100,00	2.478.266.455	100,00
FX Credits	958.963.766	40,73	1.046.234.382	42,22
Public Banks	439.093.380	18,65	439.858.417	17,75
Public Enterprises & Institutions	105.409.589	24,01	101.704.313	23,12
Agriculture	11.347.871	2,58	10.560.536	2,40
Mining & Quarrying		0,00		0,00
Manufacturing	335.315	0,08	372.736	0,08
Transport & Communication	1.277.534	0,29	1.313.556	0,30
Trade	132.975.430	30,28	137.020.125	31,15
Export	977.788	0,22	1.034.454	0,24
Tourism	10.595.717	2,41	11.072.366	2,52
Building & Construction	58.978.716	13,43	58.715.510	13,35
Personal and Professional Credits	117.100.175	26,67	117.991.336	26,82
Small Business	95.246	0,02	73.486	0,02
Private Banks	430.083.972	18,27	461.644.590	18,63
Public Enterprises & Institutions	2.822.997	0,66	6.700.629	1,45
Agriculture	69.612	0,02	80.464	0,02
Mining & Quarrying	177.597	0,04	117.950	0,03
Manufacturing	1.137.561	0,26	1.067.619	0,23
Transport & Communication	4.193.073	0,97	3.764.502	0,82
Trade	154.717.458	35,97	178.028.789	38,56
Export	155.226	0,04	141.916	0,03
Tourism	343.911	0,08	316.330	0,07
Building & Construction	29.600.074	6,88	28.445.753	6,16
Personal and Professional Credits	236.654.227	55,03	242.743.046	52,58
Small Business	212.235	0,05	237.592	0,05
Foreign Branch Banks	94.560.451	4,02	144.731.375	5,84
Public Enterprises & Institutions				0,00
Agriculture				0,00
Mining & Quarrying				0,00
Manufacturing				0,00
Transport & Communication				0,00
Trade	14.307.294	15,13	35.696.179	24,66
Export				0,00
Tourism				0,00
Building & Construction				0,00
Personal and Professional Credits	80.253.157	84,87	109.035.196	75,34
Small Business				0,00

Source: Central Bank of the TRNC.

DISTRUBUTION of the CREDİTS in BANKING SECTOR by CURRENCIES

YEAR PERIOD	TRY	USD	GBP	EURO	CYP	OTHER
2002	204.057.356	122.140.662	67.398.290	10.914.658	256.452	64.341
2003	374.590.048	142.955.113	78.689.043	12.485.748	1.073.511	0
2004	567.452.071	164.092.743	120.426.463	31.214.783	400.834	0
2005	868.040.057	190.741.732	160.490.169	44.573.904	932.171	0
2006						
I	931.621.839	190.203.187	184.168.931	50.719.463	3.610.339	0
II	1.031.101.512	188.477.492	177.994.661	56.028.754	1.230.957	0
III	1.071.318.805	182.456.854	194.531.331	60.932.106	4.055.696	0
IV	1.358.506.177	182.719.443	201.222.835	60.881.708	1.068.580	0
2007						
I	1.370.351.454	182.944.123	212.087.538	64.666.480	3.197.020	0
II	1.390.506.623	196.224.396	222.242.937	65.660.085	3.046.663	0
III	1.432.032.072	212.006.400	237.734.577	78.435.412	2.897.922	0

Source: Central Bank of the TRNC.

DEPOSITS in BANKING SECTOR									
		31 May 07		%		31 Aug. 2007		%	
		TRY		Portion		TRY		Portion	
Total Deposits (Interbank included)		4.825.922.709		100,00		4.982.343.910		100,00	
Total Deposits (Interbank Excluded)		4.777.755.553		99,00		4.907.025.272		98,49	
TRY Deposits (Interbank Excluded)		2.425.436.875		50,26		2.517.486.712		50,53	
Public Banks		1.146.654.749		23,76		1.195.466.491		23,99	
Sight	Official	20.353.747	1,78	27.283.968	2,28				
	Savings	33.602.982	2,93	36.363.758	3,04				
	Commercial	16.547.608	1,44	16.529.501	1,38				
	Other	15.901.353	1,39	16.152.601	1,35				
Fixed-Term	Official	333.827.308	29,11	335.164.355	28,04				
	Savings	614.836.437	53,62	648.973.454	54,29				
	Commercial	20.925.179	1,82	23.292.561	1,95				
	Other	90.660.134	7,91	91.706.294	7,67				
Private Banks		640.019.123		13,26		664.802.432		13,34	
Sight	Official	1.708.113	0,27	3.667.632	0,55				
	Savings	46.889.921	7,33	46.554.116	7,00				
	Commercial	44.726.195	6,99	40.500.683	6,09				
	Other	6.174.434	0,96	6.477.548	0,97				
Fixed-Term	Official	38.741.021	6,05	35.325.858	5,31				
	Savings	487.560.022	76,18	515.649.830	77,56				
	Commercial	8.425.613	1,32	10.554.853	1,59				
	Other	5.793.803	0,91	6.071.912	0,91				
Branch Banks		638.763.001		13,24		657.217.789		13,19	
Sight	Official	4.063.239	0,64	4.947.086	0,75				
	Savings	40.836.754	6,39	46.202.815	7,03				
	Commercial	24.354.602	3,81	26.832.443	4,08				
	Other	6.798.606	1,06	6.214.318	0,95				
Fixed-Term	Official	196.500	0,03	71.571	0,01				
	Savings	519.655.108	81,35	527.937.322	80,33				
	Commercial	25.349.918	3,97	24.343.217	3,70				
	Other	17.508.274	2,74	20.669.017	3,14				
FX Deposits (Interbank Excluded)		2.352.318.678		48,74		2.389.538.560		47,96	
Public Banks		517.646.883		10,73		517.677.557		10,39	
Sight	Official	6.499.126	1,26	9.397.411	1,82				
	Savings	33.333.460	6,44	30.548.385	5,90				
	Commercial	12.149.918	2,35	10.591.684	2,05				
	Other	5.099.746	0,99	3.193.425	0,62				
Fixed-Term	Official	86.072.605	16,63	84.585.705	16,34				
	Savings	343.375.563	66,33	349.288.526	67,47				
	Commercial	6.285.544	1,21	5.482.795	1,06				
	Other	24.830.920	4,80	24.589.625	4,75				
Private Banks		849.400.312		17,60		876.341.519		17,59	
Sight	Official	141.117	0,02	115.671	0,01				
	Savings	114.263.904	13,45	117.341.266	13,39				
	Commercial	47.814.163	5,63	47.724.642	5,45				
	Other	2.431.959	0,29	3.566.083	0,41				
Fixed-Term	Official	8.011.459	0,94	8.247.276	0,94				
	Savings	647.933.664	76,28	669.826.071	76,43				
	Commercial	19.369.299	2,28	18.374.095	2,10				
	Other	9.434.747	1,11	11.146.415	1,27				
Branch Banks		985.271.484		20,42		995.519.485		19,98	
Sight	Official								
	Savings	113.381.466	11,51	118.970.877	11,95				
	Commercial	38.300.151	3,89	30.417.589	3,06				
	Other	3.486.772	0,35	6.873.450	0,69				
Fixed-Term	Official	4.865	0,00	4.975	0,00				
	Savings	736.354.936	74,74	787.639.750	79,12				
	Commercial	75.998.724	7,71	35.107.351	3,53				
	Other	17.744.570	1,80	16.505.493	1,66				
Interbank Deposits		48.167.156		1,00		75.318.638		1,51	
Interbank Deposits (TRL/TRY)		19.305.676		40,08		33.211.993		44,10	
Sight		2.815.980		14,59		9.717.220		29,26	
Fixed-Term		16.489.696		85,41		23.494.773		70,74	
Interbank Deposits (FX)		28.861.480		59,92		42.106.645		55,90	
Sight		4.312.154		14,94		4.379.196		10,40	
Fixed-Term		24.549.326		85,06		37.727.449		89,60	

Source: Central Bank of the TRNC.

DISTRIBUTION of the DEPOSITS in BANKING SECTOR by CURRENCIES

YEAR	PERIOD	TRY	USD	STG	EURO	CYP	OTHER
2002		759.860.595	162.308.015	317.258.345	31.569.114	3.478.938	1.486.389
2003		1.132.710.229	185.918.968	401.762.872	43.866.368	5.884.008	1.309.745
2004		1.388.190.156	234.758.470	523.638.087	75.814.125	8.788.229	90.843
2005		1.821.521.201	202.297.433	581.019.764	100.652.055	9.745.495	831.428
2006	I	1.989.935.568	200.200.330	586.295.797	95.561.368	9.368.332	487.418
	II	2.233.834.757	213.901.380	581.422.854	96.228.166	9.053.967	400.668
	III	2.199.281.637	242.941.877	605.181.029	120.138.323	9.430.689	301.114
	IV	2.301.709.471	302.903.114	618.210.238	128.968.549	11.841.187	1.132.020
2007	I	2.386.524.001	279.922.588	649.150.249	124.140.820	9.555.494	715.348
	II	2.444.742.550	293.811.349	665.793.039	136.067.208	9.453.607	283.887
	III	2.550.698.704	299.392.107	676.347.106	140.865.321	9.629.487	249.940

Source: Central Bank of the TRNC.

LICENSED BANKS OPERATING UNDER BANKING LAW

- 1 Cyprus Vakıflar Bank Ltd.
- 2 Akfinans Bank Ltd.
- 3 Creditwest Bank Ltd.
- 4 Artam Bank Ltd.
- 5 Asbank Ltd.
- 6 Kıbrıs Continental Bank Ltd.
- 7 Deniz Bank Ltd.
- 8 Cyprus Economy Bank Ltd.
- 9 Cyprus Turkish Cooperative Central Bank Ltd.
- 10 Limassol Turkish Cooperative Bank Ltd.
- 11 Şekerbank (Kıbrıs) Ltd.
- 12 Turkish Bank Ltd.
- 13 Universal Bank Ltd.
- 14 Viyabank Ltd.
- 15 Near East Bank Ltd.
- 16 Yeşilada Bank Ltd.
- 17 Faisal Islamic Bank of Kıbrıs Ltd.
- 18 HSBC Bank A.Ş.
- 19 Türkiye Garanti Bankası A.Ş.
- 20 Türkiye Halk Bankası A.Ş.
- 21 Türkiye İş Bankası A.Ş.
- 22 T.C. Ziraat Bankası A.Ş.
- 23 Oyak Bank A.Ş.
- 24 Türkiye Ekonomi Bankası A.Ş.

Source: Central Bank of the TRNC.

**INTEREST RATES on TRL / TRY DEPOSITS APPLIED by BANKS
(MINIMUM & MAXIMUM)**

YEAR	MONTH	SIGHT	FIXED - TERM			
			1 Month	3 Months	6 Months	1 Year
2002		2 - 20	25 - 60	25 - 60	25 - 60	25 - 60
2003		0 - 25	10 - 35	15 - 33	18 - 34	18 - 35
2004		0 - 13	5 - 26	10 - 27	15 - 27	14 - 27
2005	1	0 - 13	5 - 26	10 - 27	15 - 27	14 - 27
	2	0 - 13	5 - 26	10 - 26	12,5 - 27	12 - 27
	3	0 - 12	5 - 26	10 - 27	12 - 27	11 - 27
	4	0 - 12	5 - 26	10 - 27	11 - 27	11 - 27
	5	0 - 12	5 - 26	10 - 27	10,5 - 26	9,5 - 26
	6	0 - 12	5 - 26	10 - 27	10,5 - 26	9,5 - 26
	7	0 - 12	5 - 26	10 - 27	11 - 27	11 - 27
	8	0 - 12	5 - 26	10 - 27	10,5 - 26	9,5 - 26
	9	0 - 12	5 - 26	10 - 27	10,5 - 26	9,5 - 26
	10	0 - 12	5 - 26	10 - 27	11 - 26	10 - 26
	11	0 - 12	5 - 26	10 - 27	11 - 26	10 - 26
	12	0 - 12	5 - 26	10 - 27	11 - 26	10 - 26
2006	1	0 - 12	10 - 26	11 - 27	12 - 26	10 - 26
	2	0 - 12	10 - 26	11 - 27	12 - 26	10 - 26
	3	0 - 12	10 - 26	11 - 21	12 - 22	10 - 24
	4	0 - 12	10 - 26	11 - 21	12 - 22	10 - 24
	5	0 - 12	10 - 25	11 - 23	12 - 22	10 - 24
	6	0 - 12	10 - 25	11 - 23	12 - 22	10 - 24
	7	0 - 12	10 - 25	11 - 23	12 - 22	10 - 24
	8	0 - 12	10 - 25	11 - 23	12 - 22	10 - 24
	9	0 - 12	10 - 25	11 - 23	12 - 22	10 - 24
	10	0 - 12	10 - 25	11 - 23	12 - 22	10 - 24
	11	0 - 12	10 - 25	11 - 23	12 - 22	10 - 24
	12	0 - 12	10 - 25	11 - 23	12 - 22	10 - 24
2007	1	0 - 12	10 - 25	11 - 23	12 - 22	10 - 24
	2	0 - 12	10 - 25	11 - 23	12 - 22	10 - 24
	3	0 - 12	10 - 25	11 - 23	12 - 22	10 - 24
	4	0 - 12	10 - 25	11 - 23	12 - 22	10 - 24
	5	0 - 12	10 - 25	11 - 23	12 - 22	10 - 24
	6	0 - 12	10 - 25	11 - 23	12 - 22	10 - 24
	7	0 - 12	10 - 25	11 - 23	12 - 22	10 - 24
	8	0 - 12	10 - 25	11 - 23	12 - 22	10 - 24
	9	0 - 12	10 - 25	11 - 23	12 - 22	10 - 24

Source: Central Bank of the TRNC.

**INTEREST RATES on USD DEPOSITS APPLIED by BANKS
(MINIMUM & MAXIMUM)**

YEAR	MONTH	SIGHT	FIXED - TERM			
			1 Month	3 Months	6 Months	1 Year
2002		0,50 - 5,00	1,00 - 10,50	1,95 - 10,50	2,00 - 10,50	2,50 - 10,50
2003		0,00 - 2,00	1,00 - 5,50	1,00 - 5,75	1,50 - 6,00	2,00 - 6,50
2004		0,00 - 5,00	1,00 - 5,50	1,00 - 5,75	2,00 - 6,00	2,00 - 6,50
2005	1	0,00 - 5,00	1,00 - 5,50	1,00 - 5,75	2,00 - 6,00	2,00 - 6,50
	2	0,00 - 5,00	1,00 - 5,50	1,00 - 5,75	2,00 - 6,00	2,00 - 6,50
	3	0,00 - 2,00	1,00 - 5,50	1,00 - 5,75	2,00 - 6,00	2,00 - 6,50
	4	0,00 - 2,00	1,00 - 5,50	1,00 - 5,75	2,00 - 6,00	2,00 - 6,50
	5	0,00 - 2,00	1,00 - 5,50	1,00 - 5,75	2,00 - 6,00	2,00 - 6,50
	6	0,00 - 2,00	1,00 - 5,50	1,85 - 5,75	2,00 - 6,00	2,00 - 6,50
	7	0,00 - 2,00	1,00 - 5,50	1,85 - 5,75	2,00 - 6,00	2,00 - 6,50
	8	0,00 - 2,00	1,00 - 5,50	1,85 - 5,75	2,00 - 6,00	2,00 - 6,50
	9	0,00 - 2,00	1,00 - 5,50	1,85 - 5,75	2,00 - 6,00	2,00 - 6,50
	10	0,00 - 2,00	1,00 - 5,50	1,85 - 5,75	2,00 - 6,00	2,00 - 6,50
	11	0,00 - 2,00	1,00 - 5,50	1,85 - 5,75	2,00 - 6,00	2,00 - 6,50
	12	0,00 - 2,00	1,00 - 5,50	2,00 - 5,75	2,00 - 6,00	2,00 - 6,50
2006	1	0,00 - 2,00	1,00 - 5,50	2,00 - 5,75	2,00 - 6,00	2,00 - 6,50
	2	0,00 - 2,00	1,00 - 5,50	2,00 - 5,75	2,00 - 6,00	2,00 - 6,50
	3	0,00 - 2,00	1,00 - 5,50	2,00 - 5,75	2,00 - 6,00	2,00 - 6,50
	4	0,00 - 2,00	1,00 - 5,50	2,00 - 5,75	2,00 - 6,00	2,00 - 6,50
	5	0,00 - 2,00	1,00 - 5,50	2,00 - 5,75	2,00 - 6,00	2,00 - 6,50
	6	0,00 - 2,00	1,00 - 5,50	2,00 - 5,75	2,00 - 6,00	2,00 - 6,50
	7	0,00 - 2,00	1,00 - 5,50	2,00 - 5,75	2,00 - 6,00	2,00 - 6,50
	8	0,00 - 2,00	1,00 - 7,00	2,00 - 7,00	2,00 - 7,00	2,00 - 7,00
	9	0,00 - 2,00	1,00 - 7,00	2,00 - 7,00	2,00 - 7,00	2,00 - 7,00
	10	0,00 - 2,00	1,00 - 7,00	2,00 - 7,00	2,00 - 7,00	2,00 - 7,00
	11	0,00 - 2,00	1,00 - 7,00	2,00 - 7,00	2,00 - 7,00	2,00 - 7,00
	12	0,00 - 2,00	1,00 - 7,00	2,00 - 7,00	2,00 - 7,00	2,00 - 7,00
2007	1	0,00 - 2,00	1,00 - 7,00	2,00 - 7,00	2,00 - 7,00	2,00 - 7,00
	2	0,00 - 2,00	1,00 - 7,00	2,00 - 7,00	2,00 - 7,00	2,00 - 7,00
	3	0,00 - 2,00	1,00 - 7,00	2,00 - 7,00	2,00 - 7,00	2,00 - 7,00
	4	0,00 - 2,00	1,00 - 7,00	2,00 - 7,00	2,00 - 7,00	2,00 - 7,00
	5	0,00 - 2,00	1,00 - 7,00	2,00 - 7,00	2,00 - 7,00	2,00 - 7,00
	6	0,00 - 2,00	1,00 - 7,00	2,00 - 7,00	2,00 - 7,00	2,00 - 7,00
	7	0,00 - 2,00	1,00 - 7,00	2,00 - 7,00	2,00 - 7,00	2,00 - 7,00
	8	0,00 - 2,00	1,00 - 7,00	2,00 - 7,00	2,00 - 7,00	2,00 - 7,00
	9	0,00 - 2,00	1,00 - 7,00	2,00 - 7,25	2,00 - 7,25	2,00 - 7,50

Source: Central Bank of the TRNC.

**INTEREST RATES on EURO DEPOSITS APPLIED by BANKS
(MINIMUM & MAXIMUM)**

YEAR	MONTH	SIGHT	FIXED - TERM			
			1 Month	3 Months	6 Months	1 Year
2002		1,00 - 3,00	1,50 - 5,50	2,00 - 6,00	3,00 - 7,00	3,00 - 8,00
2003		0,00 - 2,00	1,00 - 5,50	1,00 - 5,75	2,00 - 6,00	2,00 - 7,00
2004		0,00 - 5,00	1,00 - 5,50	1,00 - 5,75	1,75 - 6,00	2,00 - 7,00
2005	1	0,00 - 5,00	1,00 - 5,50	1,00 - 5,75	1,75 - 6,00	2,00 - 7,00
	2	0,00 - 5,00	1,00 - 5,50	1,00 - 5,75	1,75 - 6,00	2,00 - 7,00
	3	0,00 - 2,00	1,00 - 5,50	1,00 - 5,75	1,70 - 6,00	2,00 - 7,00
	4	0,00 - 2,00	1,00 - 5,50	1,00 - 5,75	1,75 - 6,00	2,00 - 7,00
	5	0,00 - 2,00	1,00 - 5,50	1,00 - 5,75	1,75 - 6,00	2,00 - 7,00
	6	0,00 - 2,00	1,00 - 5,50	1,65 - 5,75	1,85 - 6,00	2,00 - 7,00
	7	0,00 - 2,00	1,00 - 5,50	1,00 - 5,75	1,75 - 6,00	2,00 - 7,00
	8	0,00 - 2,00	1,00 - 5,50	1,00 - 5,75	1,75 - 6,00	2,00 - 7,00
	9	0,00 - 2,00	1,00 - 5,50	1,65 - 5,75	1,85 - 6,00	2,00 - 7,00
	10	0,00 - 2,00	1,00 - 5,50	1,00 - 5,75	1,75 - 6,00	2,00 - 7,00
	11	0,00 - 2,00	1,00 - 5,50	1,00 - 5,75	1,75 - 6,00	2,00 - 7,00
	12	0,00 - 2,00	1,00 - 5,50	1,65 - 5,75	1,85 - 6,00	2,00 - 7,00
2006	1	0,00 - 2,00	1,00 - 5,50	1,70 - 5,75	1,95 - 6,00	2,00 - 7,00
	2	0,00 - 2,00	1,00 - 5,50	1,70 - 5,75	1,95 - 6,00	2,00 - 7,00
	3	0,00 - 2,00	1,00 - 5,50	2,00 - 5,75	2,00 - 6,00	2,00 - 7,00
	4	0,00 - 2,00	1,00 - 5,50	2,00 - 5,75	2,00 - 6,00	2,00 - 7,00
	5	0,00 - 2,00	1,00 - 5,50	2,00 - 5,75	2,00 - 6,00	2,00 - 7,00
	6	0,00 - 2,00	1,00 - 5,50	2,00 - 5,75	2,00 - 6,00	2,00 - 7,00
	7	0,00 - 2,00	1,00 - 5,50	2,00 - 5,75	2,00 - 6,00	2,00 - 7,00
	8	0,00 - 2,00	1,00 - 6,00	2,00 - 7,00	2,00 - 7,00	2,00 - 7,00
	9	0,00 - 2,00	1,00 - 6,00	2,00 - 7,00	2,00 - 7,00	2,00 - 7,00
	10	0,00 - 2,00	1,00 - 6,00	2,00 - 7,00	2,00 - 7,00	2,00 - 7,00
	11	0,00 - 2,00	1,00 - 6,00	2,00 - 7,00	2,00 - 7,00	2,00 - 7,00
	12	0,00 - 2,00	1,00 - 6,00	2,00 - 7,00	2,00 - 7,00	2,00 - 7,00
2007	1	0,00 - 2,00	1,00 - 6,00	2,00 - 7,00	2,00 - 7,00	2,00 - 7,00
	2	0,00 - 2,00	1,00 - 6,00	2,00 - 7,00	2,00 - 7,00	2,00 - 7,00
	3	0,00 - 2,00	1,00 - 6,00	2,00 - 7,00	2,00 - 7,00	2,00 - 7,00
	4	0,00 - 2,00	1,00 - 6,00	2,00 - 7,00	2,00 - 7,00	2,00 - 7,00
	5	0,00 - 2,00	1,00 - 6,00	2,00 - 7,00	2,00 - 7,00	2,00 - 7,00
	6	0,00 - 2,00	1,00 - 6,25	2,00 - 7,00	2,00 - 7,00	2,00 - 7,00
	7	0,00 - 2,00	1,00 - 6,25	2,00 - 7,00	2,00 - 7,00	2,00 - 7,00
	8	0,00 - 2,00	1,00 - 6,25	2,00 - 7,00	2,00 - 7,00	2,00 - 7,00
	9	0,00 - 2,00	1,00 - 6,50	2,00 - 7,25	2,00 - 7,25	2,00 - 7,50

Source: Central Bank of the TRNC.

**INTEREST RATES on GBP DEPOSITS APPLIED by BANKS
(MINIMUM & MAXIMUM)**

YEAR	MONTH	SIGHT	FIXED - TERM			
			1 Month	3 Months	6 Months	1 Year
2002		0,50 - 6,00	1,00 - 10,50	2,50 - 10,50	3,00 - 10,50	3,00 - 11,00
2003		0,00 - 3,00	1,00 - 5,50	1,00 - 6,00	2,00 - 6,50	2,00 - 7,00
2004		0,00 - 3,00	1,00 - 5,50	1,00 - 6,00	2,00 - 6,50	2,00 - 7,00
2005	1	0,00 - 3,00	1,00 - 5,50	1,00 - 6,00	2,00 - 6,50	2,00 - 7,00
	2	0,00 - 3,00	1,00 - 5,50	1,00 - 6,00	2,00 - 6,50	2,00 - 7,00
	3	0,00 - 3,00	1,00 - 5,50	1,00 - 6,00	2,00 - 6,50	2,00 - 7,00
	4	0,00 - 3,00	1,00 - 5,50	1,00 - 6,00	2,00 - 6,50	2,00 - 7,00
	5	0,00 - 3,00	1,00 - 5,50	1,00 - 6,00	2,00 - 6,50	2,00 - 7,00
	6	0,00 - 3,00	1,00 - 5,50	2,00 - 6,00	2,00 - 6,50	2,00 - 7,00
	7	0,00 - 3,00	1,00 - 5,50	2,00 - 6,00	2,00 - 6,50	2,00 - 7,00
	8	0,00 - 3,00	1,00 - 5,50	2,00 - 6,00	2,00 - 6,50	2,00 - 7,00
	9	0,00 - 3,00	1,00 - 5,50	2,00 - 6,00	2,00 - 6,50	2,00 - 7,00
	10	0,00 - 3,00	1,00 - 5,50	2,00 - 6,00	2,00 - 6,50	2,00 - 7,00
	11	0,00 - 3,00	1,00 - 5,50	2,00 - 6,00	2,00 - 6,50	2,00 - 7,00
	12	0,00 - 3,00	1,00 - 5,50	2,00 - 6,00	2,00 - 6,50	2,00 - 7,00
2006	1	0,00 - 3,00	1,00 - 5,50	2,00 - 5,75	2,00 - 6,00	2,00 - 6,50
	2	0,00 - 3,00	1,00 - 5,50	2,00 - 5,75	2,00 - 6,00	2,00 - 6,50
	3	0,00 - 3,00	1,00 - 5,50	2,00 - 5,75	2,00 - 6,00	2,00 - 6,50
	4	0,00 - 3,00	1,00 - 5,50	2,00 - 5,75	2,00 - 6,00	2,00 - 6,50
	5	0,00 - 3,00	1,00 - 5,50	2,00 - 5,75	2,00 - 6,00	2,00 - 6,50
	6	0,00 - 3,00	1,00 - 5,50	2,00 - 5,75	2,00 - 6,00	2,00 - 6,50
	7	0,00 - 3,00	1,00 - 5,50	2,00 - 5,75	2,00 - 6,00	2,00 - 6,50
	8	0,00 - 3,00	1,00 - 7,00	2,00 - 7,00	2,00 - 7,00	2,00 - 7,00
	9	0,00 - 3,00	1,00 - 7,00	2,00 - 7,00	2,00 - 7,00	2,00 - 7,00
	10	0,00 - 3,00	1,00 - 7,00	2,00 - 7,00	2,00 - 7,00	2,00 - 7,00
	11	0,00 - 3,00	1,00 - 7,00	2,00 - 7,00	2,00 - 7,00	2,00 - 7,00
	12	0,00 - 3,00	1,00 - 7,00	2,00 - 7,00	2,00 - 7,00	2,00 - 7,00
2007	1	0,00 - 3,00	1,00 - 7,00	2,00 - 7,00	2,00 - 7,00	2,00 - 7,00
	2	0,00 - 3,00	1,00 - 7,00	2,00 - 7,00	2,00 - 7,00	2,00 - 7,00
	3	0,00 - 3,00	1,00 - 7,00	2,00 - 7,00	2,00 - 7,00	2,00 - 7,00
	4	0,00 - 3,00	1,00 - 7,00	2,00 - 7,00	2,00 - 7,00	2,00 - 7,00
	5	0,00 - 3,00	1,00 - 7,00	2,00 - 7,00	2,00 - 7,00	2,00 - 7,00
	6	0,00 - 3,00	1,00 - 7,00	2,00 - 7,00	2,00 - 7,00	2,00 - 7,00
	7	0,00 - 3,00	1,00 - 7,00	2,00 - 7,00	2,00 - 7,00	2,00 - 7,00
	8	0,00 - 3,00	1,00 - 7,00	2,00 - 7,00	2,00 - 7,00	2,00 - 7,00
	9	0,00 - 3,00	1,00 - 7,00	2,00 - 7,25	2,00 - 7,25	2,00 - 7,50

Source: Central Bank of the TRNC.

(Empty Page)

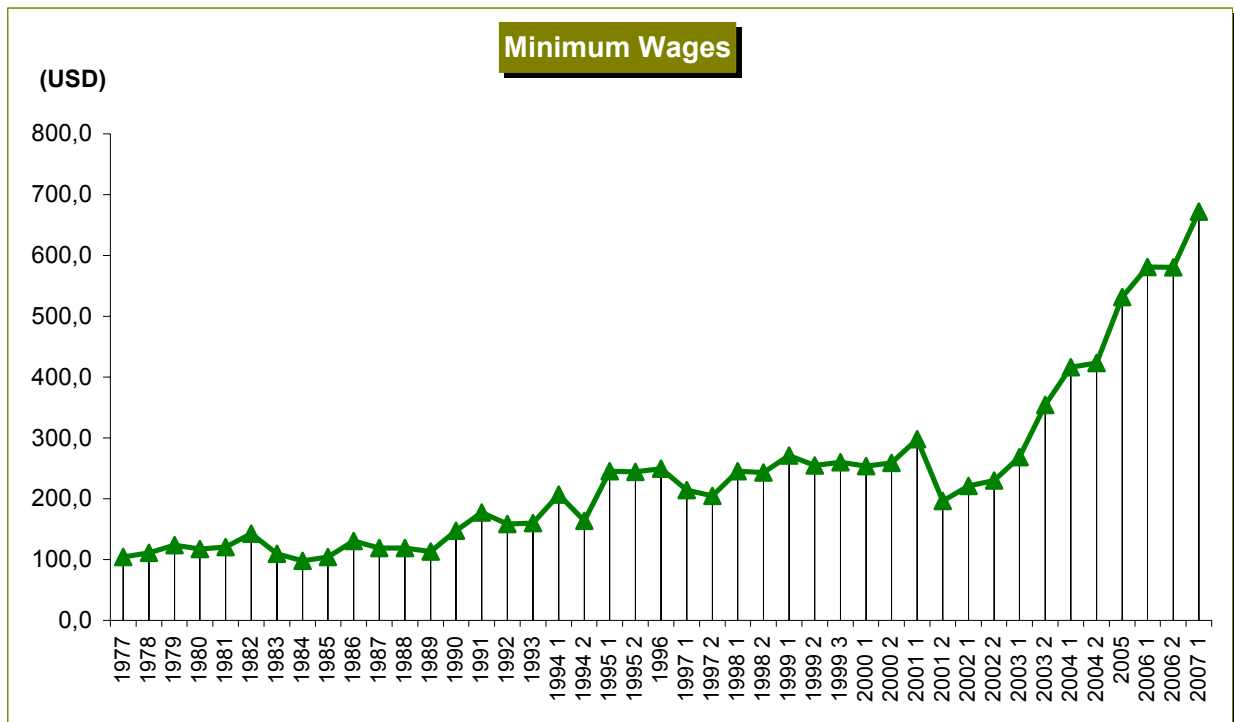
V. OTHER

(Empty Page)

MINIMUM WAGES

YEAR	TRL / TRY	USD	EFFECTIVE FROM	YEAR	TRL / TRY	USD	EFFECTIVE FROM
1977	1.820	104,0	06.05.1977	1997	23.000.000	214,2	1.01.1997
1978	2.770	110,8	30.08.1978	1998	33.800.000	204,5	1.09.1997
1979	4.333	123,8	18.07.1979	1998	50.250.000	245,2	1.01.1998
1980	8.660	117,5	04.04.1980	1998	67.000.000	243,0	1.09.1998
1981	13.000	120,6	19.06.1981	1999	85.000.000	271,2	1.01.1999
1982	22.000	142,4	10.06.1982	1999	103.000.000	254,8	1.06.1999
1983	24.270	109,7	08.07.1983	1999	115.000.000	259,9	1.09.1999
1984	30.300	97,7	21.02.1984	2000	137.000.000	253,9	1.01.2000
1985	46.000	104,0	01.01.1985	2000	160.000.000	259,1	1.07.2000
1986	75.000	130,7	01.01.1986	2001	200.000.000	298,0	1.01.2001
1987	90.000	119,1	01.01.1987	2001	240.000.000	196,3	1.08.2001
1988	121.000	118,8	01.01.1988	2002	320.000.000	221,2	1.01.2002
1989	205.000	113,1	01.01.1989	2002	380.000.000	230,2	1.10.2002
1990	340.500	147,3	01.01.1990	2003	440.000.000	268,3	1.01.2003
1991	520.000	177,6	01.01.1991	2003	500.000.000	354,2	1.08.2003
1992	806.000	158,4	01.01.1992	2004	550.000.000	416,3	1.03.2004
1993	1.373.000	159,9	01.01.1993	2004	627.000.000	423,4	1.07.2004
1994	3.000.000	206,8	01.01.1994	2005 ¹	720	531,4	1.06.2005
	5.000.000	163,7	01.08.1994	2006 ¹	780	581,3	1.01.2006
1995	9.420.000	245,3	01.01.1995		860	580,6	1.08.2006
	11.590.000	244,1	01.09.1995	2007 ¹	950	672,1	1.02.2007
1996	14.800.000	249,5	01.01.1996				

Source: State Planning Organisation



Note: Central Bank of TRNC conversion rates are used for TRL-TRY / USD